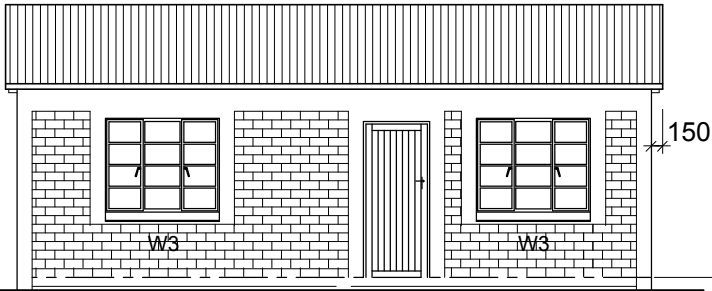
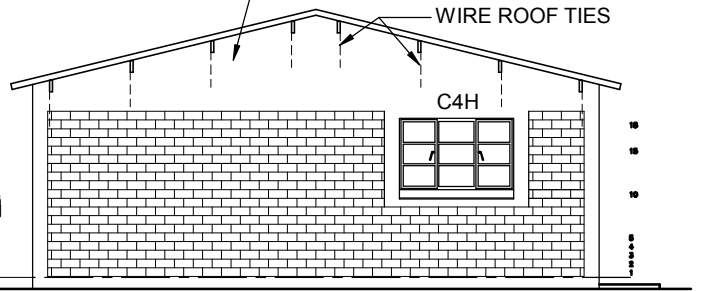


200mm PLASTER BANDS AT CORNERS AND AROUND DOORS AND WINDOWS



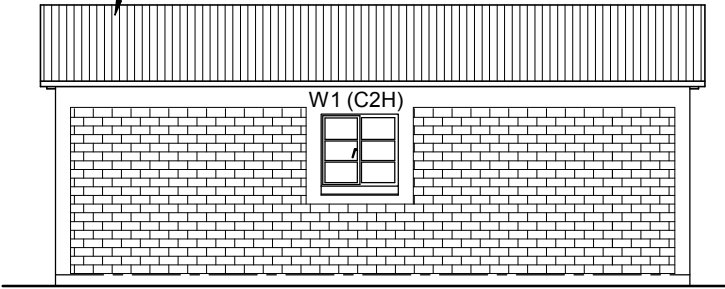
ELEVATION 1

PLASTER TO COVER ROOF TIES  
WIRE ROOF TIES



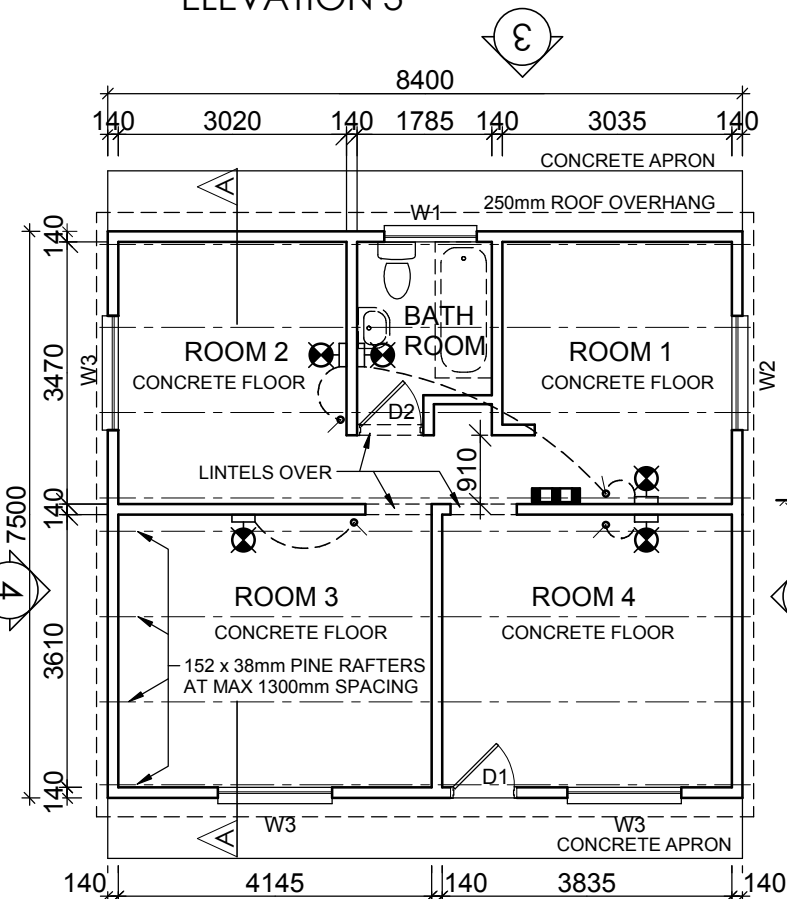
ELEVATION 2

PROFILED SHEETING

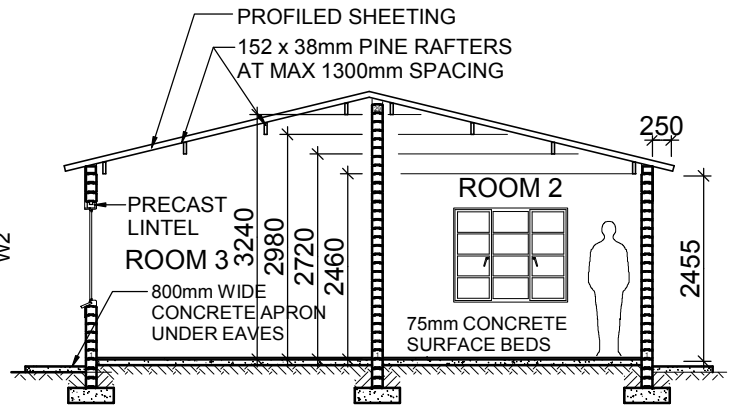


ELEVATION 3

ELEVATION 2



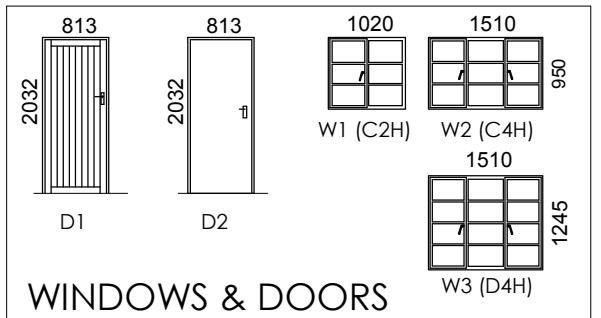
PLAN



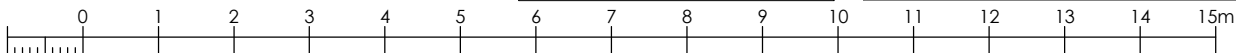
SECTION A-A

- PLUGBOARD OR D.B.
- WALL LIGHT FITTING
- SWITCH

ELECTRICAL



WINDOWS & DOORS



www.hydraform.co.za

©HYDRAFORM 2008

HOUSE TYPE 1 (d) - BASIC - FOUR ROOMS

DRAWING No  
RD95-04

REVISION -